

Welcome to LKS2



MEET THE TEAM



Interim-Headteacher
Mrs Piazza



Deputy Headteacher
Mrs Stalley



Assistant Headteacher
Inclusion
Mrs Brand



Oak
TeacherPhase leader
M/Tu/W/F
Ms Ruffell



Oak
Teacher
Thu & French
Mme Malloy



Laurel
Teacher
Ms King



Rowan
Teacher
Ms Turus



HLTA
Ms Story



TA
Ms Watson



TA
Mr Cotterell

EXPECTATIONS

- Read at home at least 3 times a week. Please record this in your child's reading record.
- Spellings to be practiced at home. (SPELLING TEST THURSDAYS)
- Correct uniform to be worn to school.
- Positive learning behaviour at all times.
- Parental support with behaviour and communication.
- To keep up to date with school correspondence - Letters and Newsletters.

PE DAYS

Tuesday
Thursday

Multiplication Check
JUNE

SWIMMING

Swimming for LKS2
Autumn 1 - Rowan
Autumn 2 - Laurel
Spring 1 - Oak

PARENTAL ENGAGEMENT

There will be parent consultations in Autumn and Spring terms.

If you wish to speak to your child's teacher throughout the year, please contact the office to arrange a call or meeting.

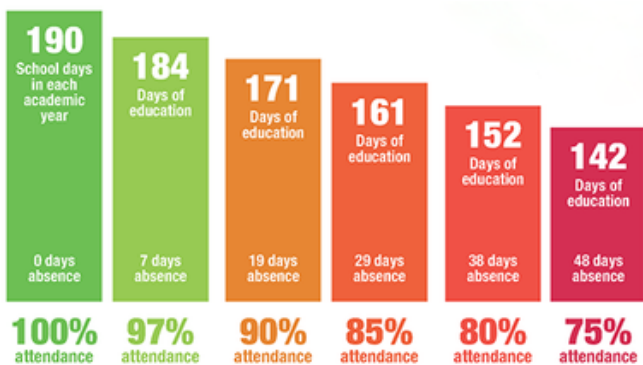
admin@churchfield.herts.sch.uk

01992 463 289

If you need to speak to your child's class teacher at the end of the day, we ask that you wait until they have finished safely dismissing their class.

ATTENDANCE

Gates open at 8:30am ready for classroom doors to be opened at 8:40am. We start the morning with Morning Mental Maths, so punctuality is really important to avoid missing input.



AWARDS

Celebration assemblies are on Fridays, where children are selected each week for awards matching the school values. Winners are published in the newsletter.

UNIFORM

Please ensure children arrive at school wearing the appropriate uniform below is our uniform policy.

Children should be dressed appropriately for their day. If children have PE they come in dressed for PE.

<ul style="list-style-type: none">• Grey trousers• Grey skirt• White shirt• School tie• White, navy blue or grey tights or socks• Navy blue cardigan or jumper with logo• Black school shoes	<ul style="list-style-type: none">• Grey shorts• Blue/white chequered dress• Blue/white chequered jumpsuit• White polo shirt with logo• Navy jumper/cardigan with logo• White, navy blue or grey socks• Black school shoes
PE Kit	
<ul style="list-style-type: none">• Black or navy tracksuit bottoms - plain, non-branded• Black or navy PE shorts (must be worn for gymnastics and the summer term) – plain and non-branded• Red t-shirt – plain and non-branded• Red jumper – plain and non-branded• Trainers• Earrings – plain studs only that must be removed on PE days• Hair accessories – black or blue hairbands and small bows only	

LUNCHES

Aspens Select School Dinner service is online for you to order your child's school dinners. Please ensure your child has a dinner ordered or they will get tomato pasta and you will be charged for a school dinner.

Below is guidance for snack time.

Healthy break time snacks

In line with healthy eating at Churchfield school here are some suggestions for break time snacks

- Popcorn
- Veggie snacks
- Cereal bars (NUT FREE)
- Dried fruit
- Fruit
- Snacking vegetables

Please do not bring the following

- Nuts
- Chocolate bar
- Peanut butter
- Crisps

Churchfield is a nut free school