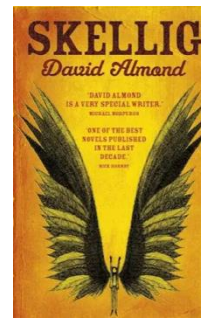


Writing

This term we will be focusing on writing Narratives and the use of dialogue.



Reading

Our reading will be based on 'Skellig'.

Maths

Sycamore & Cedar

- Angles
- Shape
- Revision of all areas

Hazel

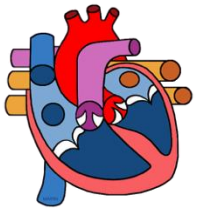
- Decimals and Percentages
- Area and Perimeter
- Statistics



Science

Circulation and Health

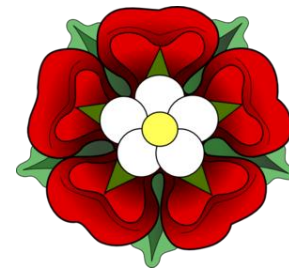
Exploring the heart and circulatory system through models and enquiries and considering how lifestyle choices affect our health.



History

What was life like in Tudor England?

Exploring the leaders and evidence from the Tudor period.



Religious Education

Judaism

What is holiness for Jewish people: a place, a time, an object or something else?



PE

Music

Enjoying Musical Styles

PSHE

Healthy Me.

Computing

Spreadsheets

Art / D&T

Painting and Mixed Media

Home Learning

Reading and Maths